



COMPANY PROFILE

Copyright Notice

Francis-Lau Construction Company Limited retains the copyright for this document and all of its contents. This proposal should be considered private and confidential and may not be shared with any third party without the prior written permission of Francis-Lau Construction Company Limited.

Executive Summary

With over fifty-six (56) years of experience in the fabrication and erection of structural steel buildings, the last thirty-five (35) of which involved the exportation of structures to Dominica, St. Lucia, St. Vincent and the Grenadines, Barbados, Grenada, St. Maarten, St. Kitts, Antigua and Suriname, we have demonstrated to clients over this period the competence, capability, and capacity to deliver building solutions in a timely and economical manner.

Vision

To be the recognized leader in Caribbean Steel Construction, and thereby the structural steel “firm of choice” for Caribbean decision makers.

Mission

To uphold the values of fairness, honesty and integrity by providing quality client service in a manner that is both safe and sustainable

Objectives

- The objective of FLC is to be the recognized leader in Caribbean Steel Construction by upholding the values of fairness, honesty, and integrity.
- Providing quality client service in a manner that is both safe and sustainable.
- Financially stable in the interest of all stakeholder.

Strategy

FLC believes that an aptly formulated project makes a difference between smooth implementation and one fraught with unnecessary challenges and difficulties. Successful project execution is measured against the following three (3) key factors:

- Safety - Zero Incidents or Accidents. Health, Safety, Security, and the Environment is of paramount importance.
- Quality - Zero Defects. Quality Assurance & Control, a series of quality checks in order to capture issues early.

Production - On Time and within Budget

Tactics

- Work with key stakeholders to develop long lasting business relationships.
- Aim to have majority market share both locally and in the Caribbean region.
- Network with key engineers and contractors in the region

Organization, Background & Qualifications

Background

Founded in 1963, Francis-Lau Construction Company Limited is a family owned and operated specialist construction firm that works with secondary steelwork for the full spectrum of industry sectors in Trinidad & Tobago, and throughout the rest of the Caribbean. We are strategically positioned among the most prominent in the industry and remain committed to meeting and exceeding customer expectations when it comes to structural steel fabrication and erection, whether we work in the capacity of tier-one or sub-contractors.

With experience that spans over 56 years, we possess the skills-base and competencies to meet the most challenging requirements, at home and abroad. We do continue to uphold our reputation for delivery of projects that are on time, within budget, to scope, and meets the clients' expectations. We aim to be the recognized leader in Caribbean steel construction and thereby the structural steel "Firm of Choice" for Caribbean decision makers and shall achieve this by upholding the values of fairness, honesty, and integrity, and by providing quality client service in a manner that is both safe and sustainable.

Our Services

Our services include;

- Design
- Structural Steel Fabrication
- Structural Steel Erection
- Supply and Installation of Roofing
- Abrasive Sandblasting
- Ancillary Products

Our Reach

We have evolved as a leading specialist construction firm in the Caribbean, with landmark projects from St. Maarten to Guyana. In 1984 we began exporting completely knocked down (CKD) steel structures to St. Kitts and Nevis, Dominica, St. Lucia, St. Vincent and the

Grenadines, U.S. Virgin Islands, Barbados, and Grenada. Our relevant project experience highlights some of the projects that have been completed throughout the region.

Management Structures & Systems

Since 2006, we have been working to the American Institute of Steel Construction (AISC) fabrication and erection standards and have over this period, developed robust quality and safety management systems to govern all operational processes with the company. However, as part of our commitment to continual improvement, we have begun the process to becoming AISC certified. We are also a STOW certified company.

STOW Management

STOW stands for Safe to Work in Trinidad & Tobago and is a certification system which demonstrates that contractors have implemented safety systems that make it safe for them to work in any of the energy companies in Trinidad & Tobago.

Quality Assurance Management

We are committed to achieving our customers' satisfaction by providing quality products and solutions in a timely and economic manner. This is done through employee involvement, teamwork, the effective utilization of resources, and continually improving the effectiveness of our quality management systems. We are also committed to fully understanding our customers' needs, done through liaising at all stages of the planned works.

Health, Safety, and Environment Management

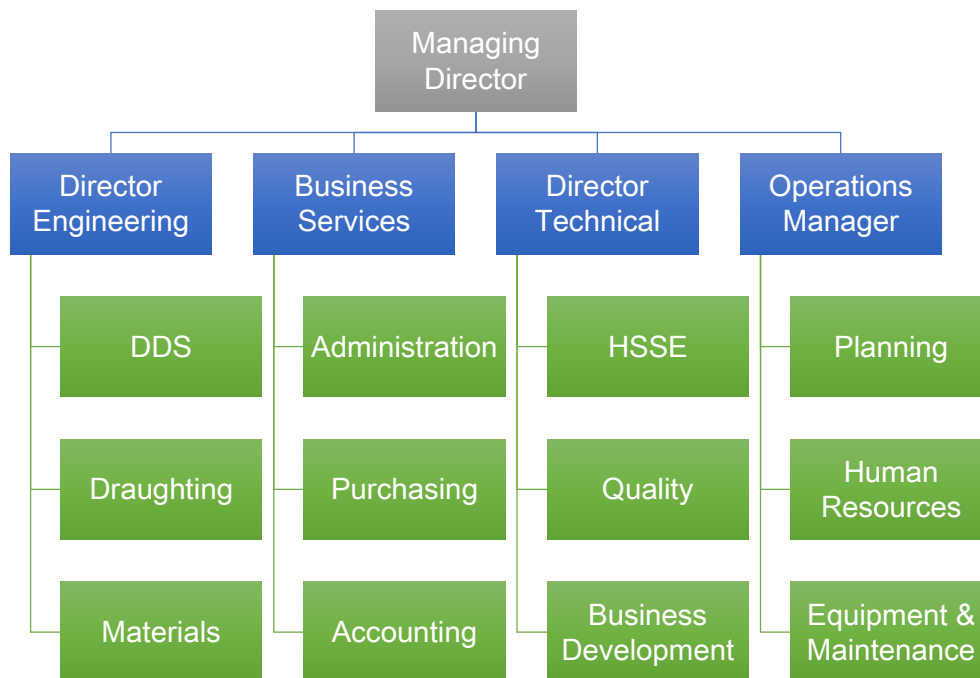
Francis-Lau Construction Company Limited is committed to protecting the health and safety of all employees, customers, and the public and preservation of the environment on any project we engage. By implementing a system of continuous improvement through the monitoring, review, and evaluation that are part of a comprehensive environmental, health, and safety program we can improve the quality of our services and processes whilst simultaneously protecting the health and safety of our employees, the public, and anything that could be affected by our operations.

We believe that the only successful projects are those that are executed in a safe manner and completed with an exemplary safety record. Therefore, we pledge to provide the time and resources necessary for our people to perform their duties in the safest manner possible. The Management of Francis-Lau Construction Company Limited is totally committed to safety and we insist that our Employees put safety first and foremost when executing their work.

Our People

Our employees are a highly-skilled, qualified, and certified team of engineers, project managers, fabricators and erectors, who possess several years' experience in their respective fields. We have continued to maintain a high degree of customer satisfaction as we steadily meet their requirements and expectations, a culture which has been preserved over the years as we continue to broaden our scope within the region. Our core team is currently comprised of twenty (20) qualified and experienced individuals distributed across several key business areas covering Engineering, Operations, Business Services, and Technical.

Figure 1: Francis-Lau Construction Company Limited Organizational Chart



Christopher Francis-Lau

Managing Director

Christopher is a result driven, self-motivated, and resourceful Managing Director with a proven ability to develop and strengthen the company's management systems and teams in an effort to maximize efficiency and profitability, and raise the profile of the company locally and regionally. As an integral member of the team for the past twenty-five (25) years, Christopher has developed significance experience in the areas of project management, steel fabrication, and construction. He has also engendered excellent communication skills and is able to establish sustainable and profitable relationships with customers, suppliers, and stakeholders throughout the Caribbean. Christopher holds a MBA in Management from Anglia Ruskin University.

Andre [Francis-Lau](#)

Director

As a part of the company for the past forty-five (45) years, Andre has brought a great wealth of knowledge and experience to the area of steel fabrication and erection, quality control and management, welding, design, and construction. His current areas of focus at the company include the development of new business, management of ongoing projects throughout the region, driving the required Health and Safety, and Quality Management Systems, and ensuring that the company's projects are successfully completed in accordance with established requirements and client expectations.

Wayne [Francis-Lau](#)

Chairman

As a part of the company for the past forty-six (46) years, Wayne has also brought a great wealth of knowledge, experience, and charisma to the area of steel fabrication and erection. He leads the estimating and tendering team which is able to deliver affordable solutions to the company's clients, preparation of engineering design drawings and detailing, and coordination of holistic building solutions in coordination with Clients, Design Consultants, and Sub-Contractors. In harmony with Christopher and Andre, Wayne works to ensure quality structural solutions for each of the company's clients, in accordance with their expectations and requirements.

Ria [Samuel](#)

Manager - Finance, Human Resource & Administration

As the Finance Manager of the Company and holding over twenty-one (21) years' experience in the field of finance, Ria's role is to prepare, monitor and analyse financial statements and other management reports. She advises management on future projects and investment. She is also responsible for monitoring operational activities of the company and ensuring that internal controls and compliances within the organization are met.

Ria holds an MBA, with training in Human Resource Management and Administration, she maintains employee relations by addressing grievances and other HR matters.

Capabilities

Design

We are fully-equipped with CAD (computer aided drafting) software and tools and are in the process of further developing and expanding our 3D BIM (building information modelling) capabilities which translate to enhanced productivity, improved operating efficiency, and minimal errors saving valuable time and costs for our clients.

Structural Steel Fabrication

Located at our head offices, our full-service fabrication facility has a total production space of thirty-five thousand (35,000ft²) square feet, with two overhead cranes totalling ten (10) tonne lifting capacity, and the capability to handle the largest and most challenging projects. We also maintain and operate a secondary facility, located at Lot #3D-3 Union Industrial Estate, La Brea.

Structural Steel Erection

The erection of our steel structures is completed in a timely and economical manner. Our field installation crews hold safety as a priority and our management systems ensure full compliance with the established designs and quality expectations. Our operational teams help to ensure a smooth process through the provision of proper transportation of materials, unloading and storage facilities, and adequately prepared craning and staging areas. To ensure trouble-free operation and quality erection, every aspect of our work is continually checked and rechecked.

Supply and Installation of Roofing

We supply and install pre-painted roof sheet, aluzinc sheet, roof ventilators, guttering and down pipe for the construction sector.

Abrasive Sandblasting

We do abrasive sandblasting and painting done to required specification.

Ancillary Products

Not only do we fabricate and erect your steel structures, our organization can fabricate and supply your next building project with the following Speciality Metal Fittings / Components:

- Holding down bolts.
- Sag rods.
- Shear connectors.
- Cleats.
- Fabricated connection plates.
- Galvanize brackets.
- Other miscellaneous construction fittings.

Relevant Project Experience

Francis-Lau Construction Company Limited has been involved in several projects which have redefined the landscapes of the Caribbean communities. Medical complexes, multi-storey car parks, residential high-rises, corporate offices, and agricultural warehouses throughout the Caribbean have benefited from having our hand in their construction. Here are some of the more prominent and relevant projects that we have been engaged within the last seven (7) years, regionally and locally.



Basketball Facility

Fabrication and erection of structural steelworks

[Project Status: Ongoing](#)

[Location: Dominica](#)



Holy Cross College

Fabrication and erection of structural steelworks

[Project Status: Ongoing](#)

[Location: Trinidad & Tobago](#)



Wet Park Cabanas

Fabrication and erection of structural steelworks

Project Status: Ongoing

Location: Trinidad & Tobago



Destination Plaza Block C

Fabrication and erection of structural steelworks

Project Status: Completed

Date of Completion: May 2019

Location: Trinidad & Tobago



MHI TDM Project

Located at La Brea Union Estate, Fabrication, sandblasting, painting and erection of MHI MWH warehouse.

Project Status: Completed

Date of Completion: March 2019

Location: Trinidad & Tobago



Grenada House of Parliament

Erection of structural steelworks

Project Status: Completed

Date of Completion: May, 2017

Location: Grenada



Royalton Hotel

Fabrication and erection of all new structural steel framing for the Royalton Hotel for NH International, St Lucia.

Project Status: Completed

Date Of Completion: September, 2016

Location: St Lucia



Golden Rock

Fabrication and erection of all new structural steel framing for the Golden Rock Commercial Park, a mixed-use residential and commercial development.

Project Status: Completed

Date Of Completion: May, 2016

Location: St Kitts



Atlantic LNG

Outfitting and upgrading of two (2) existing buildings with blast protection, inclusive of civil works.

Project Status: Completed

Date Of Completion: May, 2016

Location: Trinidad & Tobago



C3 Centre

Fabrication and erection of all new structural steel buildings as part of an all new twenty (20) acres commercial development for JT Allum & Company Limited.

Project Status: Completed

Date Of Completion: August, 2015

Location: Trinidad & Tobago



Princes Town East Secondary School

Fabrication and erection of a new building for the Princes Town East Secondary School for NH International.

Project Status: Completed

Date Of Completion:
February, 2014

Location: Trinidad & Tobago



Trinidad Generation Unlimited Plant

Located at La Brea Union Estate, the Trinidad Generation Unlimited (TGU Plant) Works involved the design, fabrication, and installation of platforms and catwalks throughout the facility, for the Trinidad & Tobago Electricity Commission (T&TEC).

Project Status: Completed
Date of Completion: August, 2013

Location: Trinidad & Tobag

Project Strategy

An aptly formulated project approach makes the difference between smooth implementation and one fraught with unnecessary challenges and difficulties. The successful execution of this project will be measured along three (3) key factors;

- Safety. Zero Incidents or Accidents
- Quality. Zero Defects
- Production. On Time and within Budget

Health, Safety, Security & the Environment

Health, Safety, Security, and the Environment is paramount to the success of the project. All procedures and processes implemented are intended to support our goal of completing the project with zero incidents or accidents. To ensure this, coverage by qualified safety personnel will be provided with a supervision ratio of 30:1. Exception will be made in instances where the magnitude of the work-front may diminish the effectiveness of this ratio. The appropriate policies and systems will be put in place to support our goal of zero incidents. Notwithstanding, a response plan has already been formulated to treat with illness and injuries in the event that it should occur.

Quality Assurance & Control

In order to capture issues early, a series of quality checks and stage gates will be implemented.

Engineering

Upon receipt of the engineering drawings (one month before start of work), they will be reviewed by the draughtsman to verify dimensions, locations, and constructability. Detailed / simplified installation drawings may be developed for in-house use if necessary. The review period shall be used to clarify any anomalies discovered so as to ensure a smooth and continuous sequence of installation. The verified drawings will be used at the receiving inspection stage to confirm dimensions, configuration, and materials.

A surveyor will be made available on site to provide bench marks and verify the as-built location of the foundations in relation to the drawings. At this stage a gap analysis will prove / disprove the need for remedial works. This will be brought to the attention of the client along with recommendations for action. Continuous checks by the surveyor throughout the installation process will ensure compliance with the allowed tolerance as outlined in the Project ITP.

Non Destructive Examination (NDE)

The construction methodology is supported by a temporary facility for site fabrication purposes. This is to facilitate the following:

- Repairs
- New Fabrication
- Erection Aids
- Modifications
- Support to Installation Crew

NDE to support the QA/QC Policy will be catered for on a call-out basis. One (1) call out per week will be scheduled or as dictated by project requirements.

Construction

Constructability

The sequence of installation will be broken down into the following categories where applicable;

- Reception
- Pre-assembly
- Fabrication
- Structural Steel Installation
- Sheeting and Drainage
- Stairs, Ladders, and Access Platforms
- Appurtenances

The schedule shall be geared to commence work on the main pipe rack as a priority. The milestone for commencing work shall be commensurate with the foundation handover milestone from the preceding Civil Contractor. Secondary priority will be given to the pre-assembly of components for modular installation. This step is to;

- Improve the Erection Schedule.
- Progress sections of the Structural Scope that require coordination with the mechanical contractor before installation.

Sub-Contracted Works

Francis-Lau Construction Company Limited (FLCCL) plans to offer for subcontract, all peripheral services which include but not limited to the following;

- Surveyor
- Scaffolding
- Emergency Medical Services
- Canteen

- Parc & Waste Disposal
- Sanitation
- Non Destructive Examinations
- Third-party Inspections
- Drug testing
- Drinking water
- Security
- Fuelling
- Painting
- Sheeting, Flashing, and Guttering

This is to ensure that the company is focused on managing and progressing the core scope for successful execution. Installation of all major structural steel components shall be carried out by a specialist team. They shall continue the installation and such member across the various structures to make efficient use of the major heavy equipment.

Fabrication Location & Facilities

Our full-service fabrication facility is located at our head office, 48-49 Frederick Settlement Industrial Estate, Caroni, Trinidad and Tobago. This facility has a total covered production space of thirty-five thousand (35,000ft²) square feet with a five (5) tonne and three (3) tonne overhead lifting capacity. It provides the capability to handle the largest and most challenging of projects.

We also maintain and operate a secondary facility, located at Lot #3D-3 Union Industrial Estate, La Brea. This facility is part of a two (2) acre development.

Contact Information

Francis-Lau Construction Company Limited
48-49 Frederick Settlement Industrial Estate,
Caroni,
Trinidad and Tobago

T: 868 662 3260/9030

F: 868 663 8572

W: <http://francis-lauconstruction.com/>

E: reception.desk@francis-lauconstruction.com